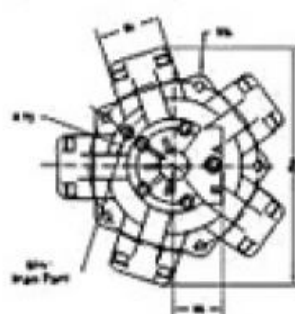
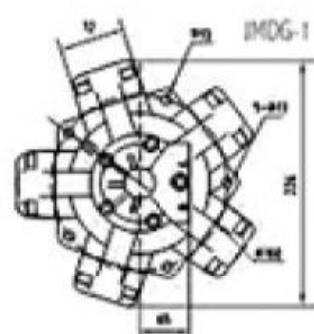
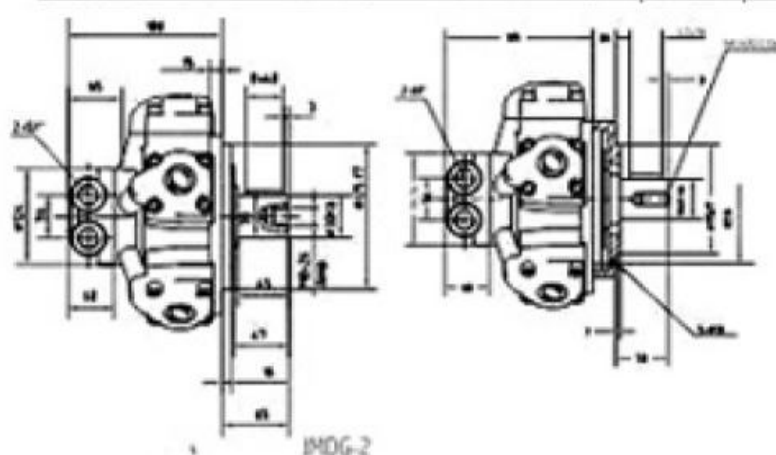


RADIAL PISTON MOTORS



TYPE	DISPLACEMENT	FRAMES	PRESSURE		TORQUE		SPEED	WEIGHT
			Rated bar	Max. bar	Rated N.m	Theoretical N.m / M.pa		
JMDG	c.c/ rev.						r.p.m	Kg
1-50	56	S 058	250	320	207	8.2	15-1250	20
1-63	64	S 058	250	320	237	9.5	15-1250	20
1-80	78	S 058	250	320	300	12	15-1000	20
1-100	96	S 058	250	320	355	14	15-1000	20
1-125	126	S 058	200	320	280	19	15-1000	20
1-160	159	S 058	250	320	472	23	15-1000	20
2-100	113	S 058 & S18	250	320	420	18	10-1250	27
2-150	157	S 058 & S18	250	320	581	25	10-1000	27
2-175	176	S 058 & S18	200	250	532	28	10-1000	27
2-200	201	S 058 & S18	200	250	600	32	8-800	27
2-250	254	S 058 & S18	160	200	607	38	8-630	27
2-280	271	S 058 & S18	160	200	642	40	8-630	27
3-250	254	S 18 & S 28	250	320	949	40	8-630	35
3-300	289	S 18 & S 28	200	250	864	46	6-500	35
3-350	251	S 18 & S 28	200	250	1040	55	6-400	35
3-400	351	S 18 & S 28	160	200	949	63	6-400	35
6-400	397	S 28 & S 38	250	320	1483	63	5-630	57.5
6-450	452	S 28 & S 38	250	320	1683	72	5-630	57.5
6-500	491	S 28 & S 38	200	250	1463	78	5-500	57.5
6-600	594	S 28 & S 38	200	250	1775	94	4-500	57.5
6-700	683	S 28 & S 38	160	200	1633	103	4-400	57.5
11-700	714	S 48	250	320	2667	114	4-400	94
11-800	782	S 48	250	320	2959	120	4-400	94
11-1000	995	S 48	200	250	2974	158	3-320	94
11-1100	1116	S 48	200	250	3336	177	3-320	94
11-1200	1175	S 48	200	250	3512	187	3-320	94
11-1300	1296	S 48	160	200	3080	206	3-350	94
16-1400	1375	SPL	250	320	5138	210	2-400	170
16-1600	1648	SPL	250	320	6158	262	2-400	170
16-1800	1814	SPL	200	250	5433	283	2-320	170
16-2000	2034	SPL	200	250	6030	223	2-320	170
16-2400	2412	SPL	160	200	5763	384	2-250	170
31-2500	2550	SPL	250	320	9523	405	2-250	298
31-2800	2836	SPL	250	320	10559	443	1-200	298
31-3000	3050	SPL	200	250	9135	485	1-200	298
31-3150	3142	SPL	200	250	9392	500	1-200	298
31-3500	3419	SPL	200	250	10220	544	1-160	298
31-4000	4170	SPL	200	250	12481	665	1-160	298
31-5000	5190	SPL	160	200	12387	825	1-160	298
100-6300	6133	SPL	250	320	22916	975	0.5-125	700
100-8000	7693	SPL	250	320	28744	1223	0.5-125	700
100-10000	10688	SPL	200	250	31942	1699	0.3-100	700
160-12500	13335	SPL	200	250	39433	1972	0.3-80	1000
160-16000	16040	SPL	160	200	37948	2554	0.3-63	1000



FRAMES	SHAFT	P.C.D	BOSS
S 058	30 MM	160	125 F 7
S 18	40 MM	210	175 F 7
S 28	50 MM	250	150 F 7
S 38	50 MM	310	265 F 7
S 48	70 MM	310	265 F 7